

Maverick Wines "Trial Hill Vineyard"



Legend

⑫ soil pit location



natural surface contours
(1.0m interval)



wjb consulting

Soil and Water Resource Management

PO Box 181 M: 0429 877 508
Roseworthy P: (08) 85248001
SA 5371 F: (08) 85248001
EMAIL: wjbconsulting@bigpond.com

0 25 50 125 250 metres

Copyright (c) DUNHES PTY LTD 2006

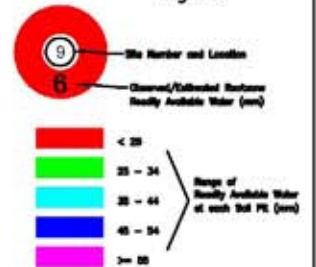
No part of this document may be transmitted or copied in any form or means, electronic or mechanical, for any purpose, without the express permission of DUNHES PTY LTD of 15 Tribal Street, HILLCREST South Australia 5086 Telephone: (08) 82662340

Drawn by: Wendy Beach	WJB CONSULTING	
Issue: Document R, Elected		
Track: SCMS_04_Survey	BASE PLAN & CONTOURS	Map of 5
Site: Maverick Wines	Lot 28, Section 2710, Hundred of Barossa - Trial Hill Road	A3
Date: September 2006		

Maverick Wines "Trial Hill Vineyard"



Legend



wjb consulting

Soil and Water Resource Management

P.O. Box 181 M: 0439 877 568
 Roseworthy P: (08) 85249601
 SA. 5371 F: (08) 85248501
 EMAIL: wjbconsulting@bigpond.com

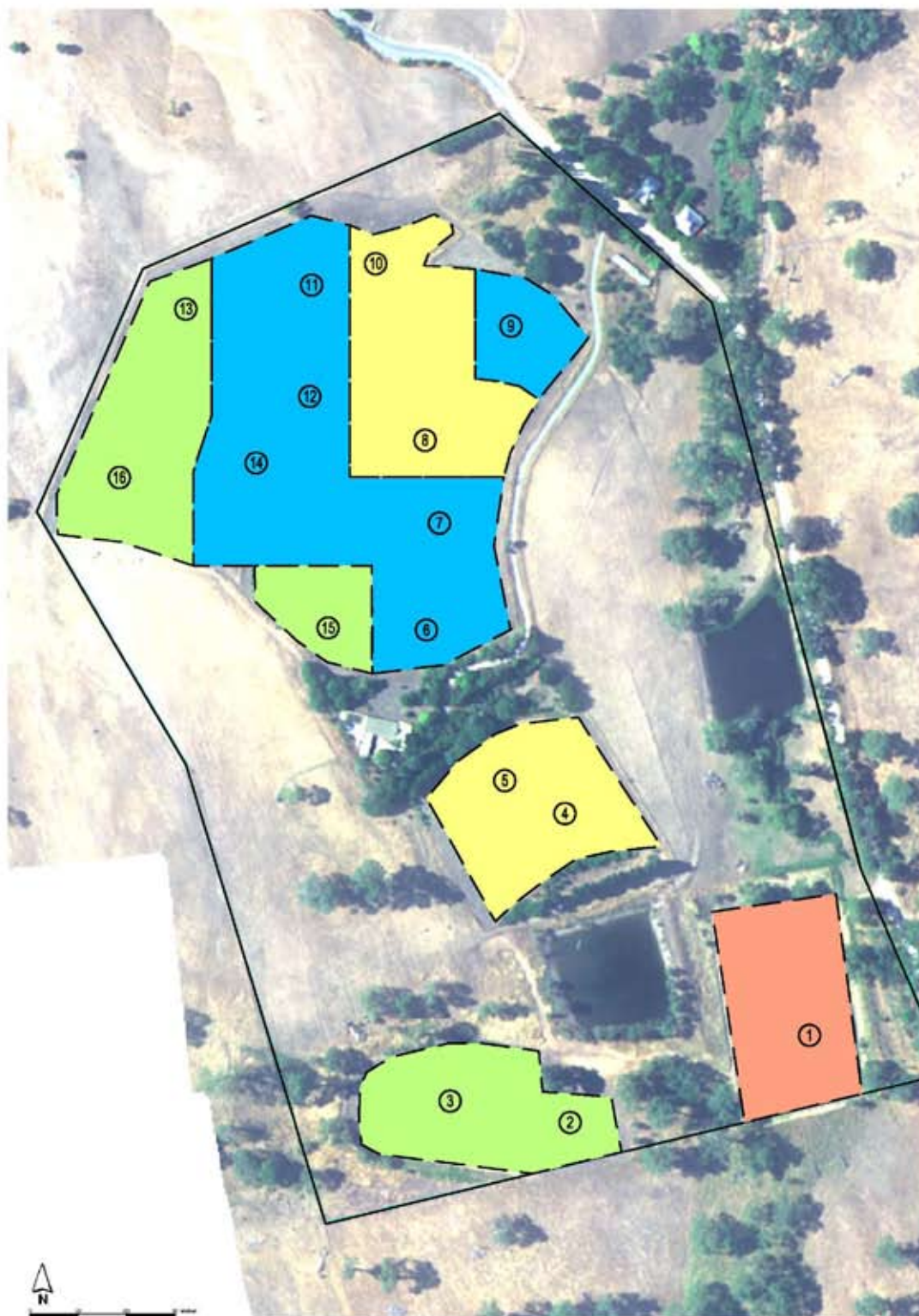


Copyright (c) DUNHESS PTY LTD 2008

No part of this document may be transmitted or copied in any form or means, electronic or mechanical, for any purpose, without the express permission of DUNHESS PTY LTD of 10 Tribal Street, HILLCREST South Australia 5086 Telephone: (08) 82662340

Client	Woolly Wood	WJB CONSULTING	
Drawn	Overland R. Elliot		
Project	SOWS Trial Survey	READILY AVAILABLE WATER	Map 3 of 5
Site	Maverick Wines	Lot 20, Section 3116, Hundred of Geroona - Trial Hill Road	A3
Date	September 2008		

Maverick Wines "Trial Hill Vineyard"



Legend

⑫ soil pit location

Unit 1. Generally moderate to deep topsoils overlying clay B-horizon and rock/rubble layers within lighter textured silty subsoils. Minimal to slight drainage hazard.

Unit 2. Generally shallow to moderate depth topsoils overlying clay with minimal rock and lighter silty textured subsoils at base of profile. Slight to moderate drainage hazard.

Unit 3. Shallow topsoil overlying deep clay profile with nil to minimal rock fragments. Moderate drainage hazard.

Unit 4. Very shallow topsoil overlying clay B-horizon with shallow water table. High drainage hazard.

Note: Boundaries are only estimated due to the arbitrary distribution of soil pit sites.

wjb consulting

Soil and Water Resource Management

PO Box 181 M: 0428 977 668
Roseworthy P: (08) 8524901
SA. 5371 F: (08) 8524902
EMAIL: wjbconsulting@bigpond.com

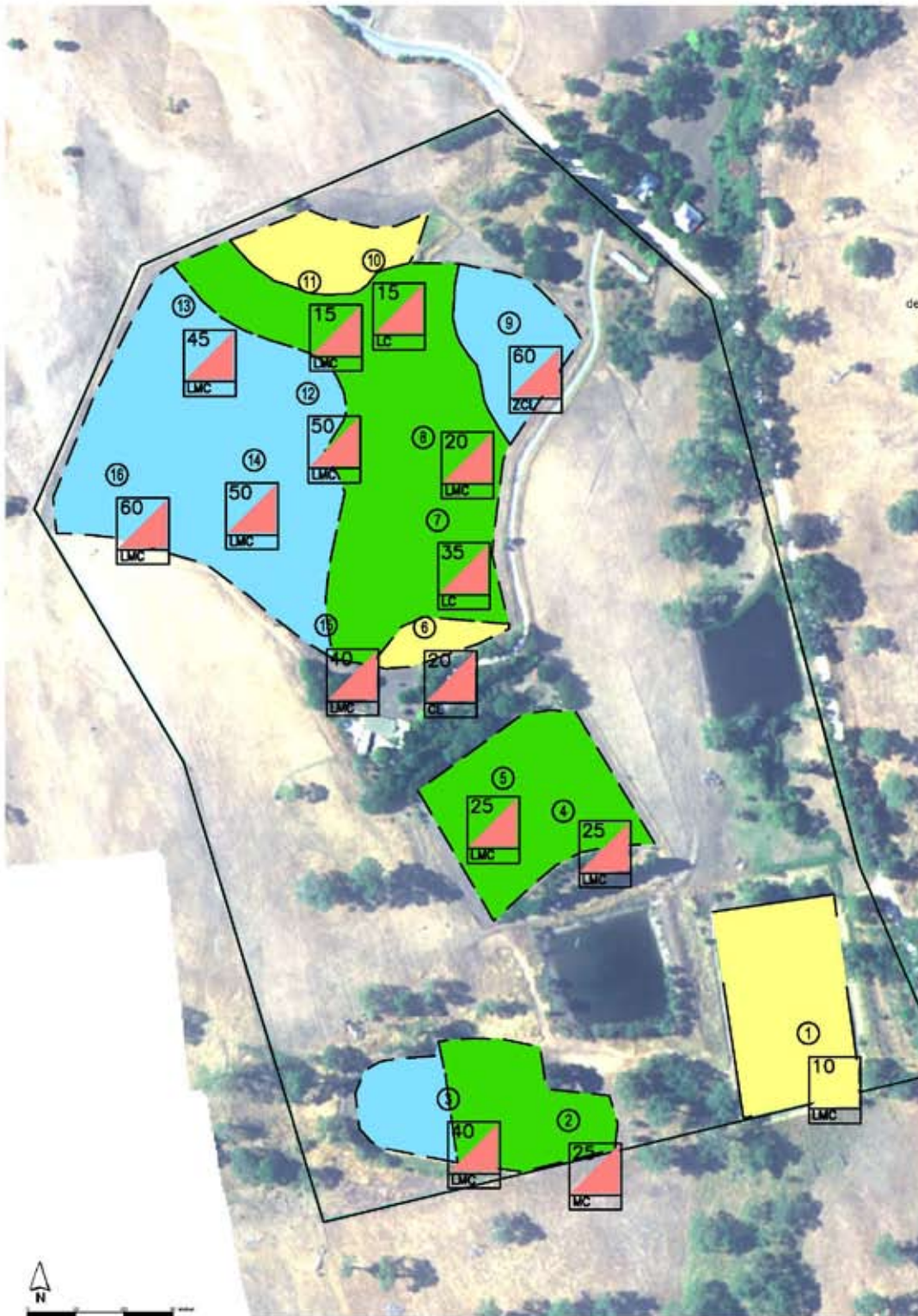
0 25 50 125 250 metres

Copyright (c) DUNHESSE PTY LTD 2006

No part of this document may be transmitted or copied in any form or means, electronic or mechanical, for any purpose, without the express permission of DUNHESSE PTY LTD of 10 Tribal Street, HILLCREST South Australia 5088 Telephone: (08) 82682340

Client	Maverick Wines	SOIL CLASSIFICATION		Map 5 of 5
Date	December 8, 2006			
Project	SOIL_T4_Survey	Lot 22, Section 2118, Municipal of Barossa - Trial Hill Road		A3
Site	Maverick Wines	20 September 2006		

Maverick Wines "Trial Hill Vineyard"



Legend

(12) soil pit location



TEXTURE

- CL - Clay loam
- ZCL - Silty clay loam
- LC - Light clay
- LMC - Light medium clay
- MC - Medium clay

PEDALITY

- Friable/Permeable
- Dense/Impermeable

HATCHURE

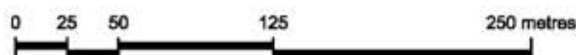
- <20cm
- 20-40cm
- >40cm

Note: Boundaries are only estimated due to the arbitrary distribution of soil pit sites.

wjb consulting

Soil and Water Resource Management

PO Box 181 M: 0828 877 668
 Roseworthy P: (08) 85248601
 SA. 5371 F: (08) 85248521
 EMAIL: wjbconsulting@bigpond.com

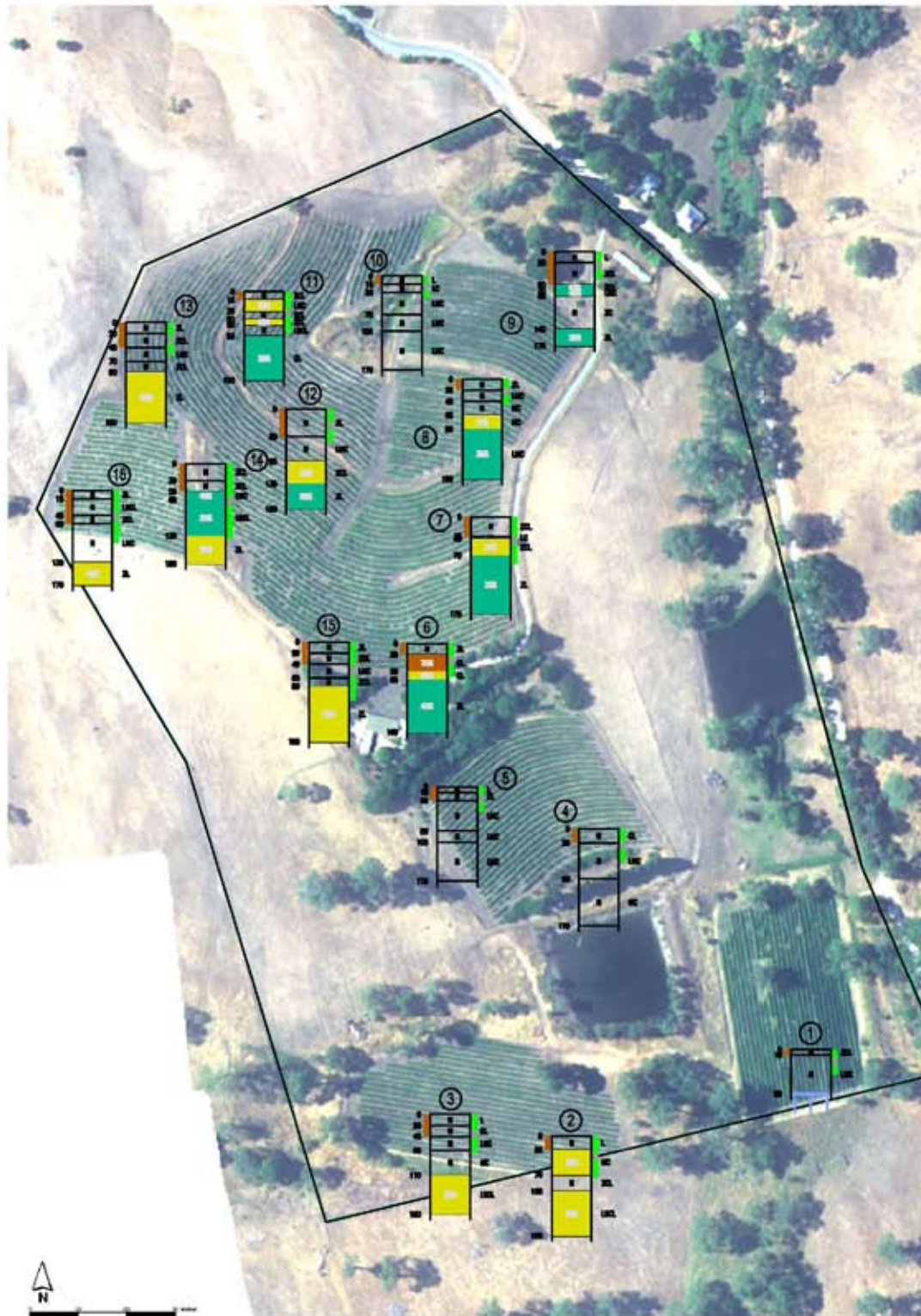


Copyright (c) DUNHES PTY LTD 2008

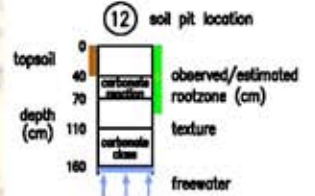
No part of this document may be transmitted or copied in any form or means, electronic or mechanical, for any purpose, without the express permission of DUNHES PTY LTD of 10 Tribal Street, HILLCREST South Australia 5088 Telephone: (08) 82682340

Client	Maverick Wines	WJB CONSULTING	
Date	December 8, 2007		
Project	SOIL TA Survey	DEPTH OF TOPSOIL	Map 4 of 5
Site	Maverick Wines		Lot 22, Section 2118, Municipal of Barossa - Trial Hill Road
Date	28 September 2008		A3

Maverick Wines "Trial Hill Vineyard"



Legend



TEXTURE

- CL - Clay Loam
- CLS - Clay Loam, Sand
- L - Loam
- LC - Light Clay
- LMC - Light Medium Clay
- LSCL - Light Sandy Clay Loam
- MC - Medium clay
- MHC - Medium Heavy Clay
- NIL - No texture, usually indicates rock.
- SCL - Sandy Clay Loam
- SL - Sandy Loam
- ZCL - Silty Clay Loam
- ZL - Silty Loam

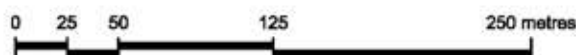
- non-carbonate type below the topsoil
- <30% - sedimentary/metamorphic rock/rubble layers
 - 30-60% - sedimentary/metamorphic rock/rubble layers
 - >60% - sedimentary/metamorphic rock/rubble layers



wjb consulting

Soil and Water Resource Management

PO Box 181 M: 0429 877 569
 Roseworthy P: (08) 86249501
 SA. 5371 F: (08) 86248501
 EMAIL: wjbconsulting@bigpond.com



Copyright (c) DUNHES PTY LTD 2008

No part of this document may be transmitted or copied in any form or means, electronic or mechanical, for any purpose, without the express permission of DUNHES PTY LTD of 10 Tribal Street, HILLCREST South Australia 5088 Telephone: (08) 82982340

Drawn: Wesley Beach	WJB CONSULTING	
Date: December 8, 2007	SOIL PROFILE DESCRIPTION	
Topic: SOIL_T1_Survey	Lot 28, Section 3118, Hatched of Barossa - Trial Hill Road	
Site: Maverick Wines	Map 2 of 5	
Date: September 2008	A3	